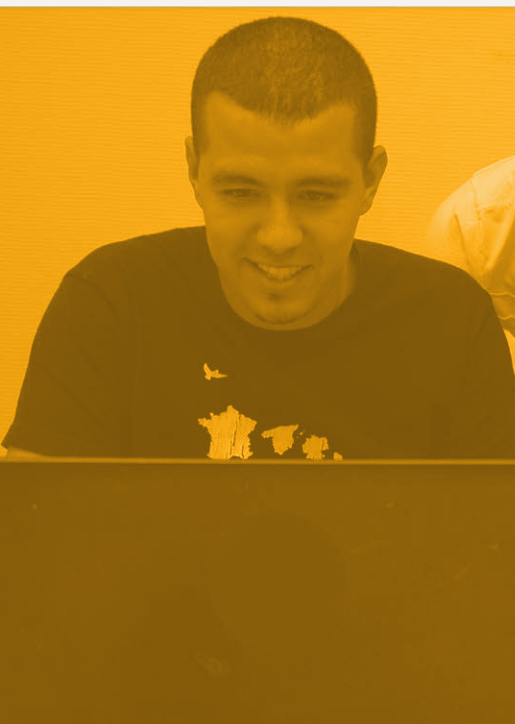


CIHEAM Montpellier, International institute  
for higher education, research and cooperation

ISO 9001 certified - Member of the AUF  
An Erasmus accredited institution – Applies the ECTS



CIHEAM  
MONTPELLIER

# SYLLABUS MASTER 2 AND MASTER OF SCIENCE 2026-2027



*Sharing Knowledge, Feeding the Future*

## THE CIHEAM MONTPELLIER, 3 missions, constant adaptation and interactions

Considering the multiple and constantly evolving challenges in achieving food security and sustainable development of rural areas, the training provided by CIHEAM Montpellier must be regularly adapted to the changing contexts and issues that its graduates will have to deal with. Our Master 2 courses have therefore been completely revised since 4 years. This adaptation is facilitated through a combined approach that links teaching to related research and cooperation development activities undertaken by our lecturer-researchers.

These research/training/cooperation development activities are integrated into the scientific environment of Montpellier, within the wide partnership of higher education and research that is the I-Site Program of Excellence (whose label has been renewed in 2022), and more specifically within the Joint Research Units, of which our lecturer-researchers are members.

The areas of expertise and action in which the CIHEAM Montpellier aims to make an original contribution include 3 main elements, in line with the CIHEAM's main priorities as defined in its strategic plan 2030 :

- **Resilient and sustainable farm system co-design facing climate and market uncertainties.**
- **Analysis of territorial systems, agricultural and rural policies in the Mediterranean.**
- **Coordination, governance, actors strategies and organization in the agri-food chains.**

Our activities favour socio-economic approaches and aim to contribute to the implementation of sustainable development objectives in the Mediterranean. Our activities, systematically conducted in partnership with institutions and socio-economic stakeholders across the Mediterranean, have long contributed to the construction and coordination of reliable networks. Our alumni, for most executives or future executives in the rural development and agri-food sectors from countries bordering the Mediterranean, both from public and private sectors, keep these networks and activities going strong long after their time spent in Montpellier!

Thierry Dupeuble, Director

1

### DEGREE COURSES

The Master's programmes at CIHEAM Montpellier follow the LMD system (Bachelor's, Master's, Doctorate) recognized in France and across Europe. The institute is accredited by France to award the national Master's degree (Master 2). These programmes combine professional training with academic openness: they prepare students for employment while also providing access to doctoral studies. Several international tracks are offered, including partnerships with Lebanon. The modular teaching system (modules lasting two to four weeks) is validated according to international standards (ECTS), facilitating equivalencies and student mobility within the CIHEAM network and its partners.

ses@iamm.fr

Dean of Studies: **Tristan Berchoux**



## DEGREES

### Master's degree (M2)

(equivalent to Bac + 5)

This degree is awarded after one year of study (60 ECTS) in one of the fields mentioned below and is aimed at candidates who have obtained at least 240 ECTS (or a minimum of four years of higher education after the Baccalaureate).

Specialization Territorial planning and local development

Master's programme **Climate change, agricultural and territorial management (CGAT)**. Co-accredited with the University Paul Valéry Montpellier 3

Specialization Management

Master's programme **Sustainable agri-food value chains: logistics, environment, strategies (CDVALES)**. Co-accredited with the University of Montpellier - MOMA (Montpellier Management) and L'Institut Agro

### Specialization Economics

• Master's programme **Agricultural, environmental development economics and food (ECODEVA)**. Co-accredited with the University of Montpellier and L'Institut Agro

• Master's programme **Mediterranean farming system design for a sustainable food-system (MIDAS)**. Co-accredited with the University of Montpellier and L'Institut Agro

• Master's programme **Territorial agricultural development, environment and modelling (DATEM)**. Co-accredited with the University of Montpellier and L'Institut Agro. This Master is offered as a dual-degree programme for students from the Lebanese University (Faculty of Agronomy)

### CIHEAM's Master of Science degree (Msc.)

(equivalent to Bac +6)

After completing the Master programme (M2), the Master of Science programme offers an additional 12-month specialization (60 ECTS).

The institute offers scholarships to candidates coming from CIHEAM member countries (Albania, Algeria, Egypt, Spain, France, Greece, Italy, Lebanon, Malta, Morocco, Portugal, Tunisia, Turkey), enabling a large number of students to benefit from coverage of living and tuition expenses.

## VOCATIONAL TRAINING

Relying on its experience in training, in co-operation and in networks coordination between partner institutions in the Mediterranean area, the CIHEAM Montpellier offers training programmes adapted to the needs of both individuals and organizations through tailored training contents and flexible teaching methods. Each course unit constituting our Master programmes can be followed "à la carte". We also offer personalized itineraries, based on an analysis of the trainee's needs and professional requirements. Furthermore, the Institute can also provide support in pedagogical engineering to training institutions by helping them draw out their educational engineering, as well as the design and implementation of their training curricula.

fpro@iamm.fr

Continuous Professional Training's manager: **Anne Cobacho**



2



## NETWORK RESEARCH, DOCTORAL PLATFORM

In a context of climate change, degradation of natural resources, socio-economic uncertainty and increased risks for food security, the Mediterranean Laboratory in Economic and Social Sciences (LAMES) of the CIHEAM Montpellier conducts specialised and applied research centred on the three following themes: food, agriculture and sustainable rural development. It is involved in projects concerning the Northern, Southern and Eastern Mediterranean countries, with funding from Europe, the National Research Agency or bilateral and multilateral cooperation funds. Our doctoral students are involved in these projects as much as possible. The LAMES, which is integrated into the local research system via Mixed Research Units (UMR), within the Montpellier Agropolis International Campus, is also a cooperation instrument thanks to its close relations with European institutions in the South and East Mediterranean.

lames@iamm.fr

LAMES Coordinator: **Hatem Belhoucette**

## DEVELOPMENT AND EXPERTISE

The CIHEAM Montpellier participates in national and international development programmes, particularly in the fields of rural development, food governance, management and development of territorial resources, value chains, organisation of stakeholders, reform and consolidation of agricultural and rural policies. The Institute also makes its expertise available to government bodies and national and international institutions working in these fields. In synergy with its network of partners, it possesses a coordinating capacity that enables it to mobilize a wide range of expertise (institutional decision-makers, local authorities, professionals, teachers, researchers, and civil society) to design and implement, within a Mediterranean cooperation framework, diversified and complementary skills.



## SUPPORT SERVICES

### A LANGUAGE CENTRE

(CFLE-CIHEAM Montpellier, Campus France member)



Located on Agropolis International Campus with direct connection with universities and research institutes, our centre provides students, researchers or professionals with a wide range of training courses (classroom training or e-learning) organized with different methods depending on the expressed needs: general or scientific French, written and oral communication, training contents and trainers, DELF and DALF preparations, english courses. The CFLE is involved in the quality approach, which enabled it since 2008 to acquire the "FLE" quality label specific to its activity ("French as a Foreign Language" quality label), together with the ISO 9001 certificate. Each year, more than 400 trainees attend our courses. They can thus enjoy the benefits of a pedagogy oriented towards a dynamic of academic and socio-cultural integration, directly linked to the Agropolis International Campus partner.

For further details on our programmes and fees:  
[www.fle-montpellier.com](http://www.fle-montpellier.com)  
[cfle@iamm.fr](mailto:cfle@iamm.fr)



### A UNIQUE DOCUMENTARY

#### COLLECTION ON THE MEDITERRANEAN



Located within the campus, the Documentation Centre welcomes the students in a convivial space and contributes to the updating and continuing development of their knowledge. Its collection is specialized on the Mediterranean region and mainly covers the subject areas developed in the training offer and the research activities: agriculture, food and sustainable rural development. The online catalogue allows a remote access to the electronic resources. The CIHEAM's collected editions are freely available in the catalogue as well. The documentalists provide trainings and support for the students to enable them to use documentary resources, to acquire a methodology for scientific information research and to achieve a scientific bibliography with a satisfactory level. The students benefit from a privileged work environment among the regional scientific community of Agropolis International.

[www.documentation.iamm.fr](http://www.documentation.iamm.fr)  
[docasistance@iamm.fr](mailto:docasistance@iamm.fr)



# THE ADVANTAGES OF THE CIHEAM MONTPELLIER

## QUALITY PROCEDURES



The "Bienvenue en France" label, obtained in 2020, attests to our capacity to welcome international audiences - composing 95% of our students - particularly in terms of the accessibility of information, individual support and the quality of the welcome and accommodation.



Since 2008, CIHEAM Montpellier has validated its continuous improvement process by obtaining **ISO 9001** certification for its quality management of on-site training. The Institute is certified for the following activities: hosting and supervising doctoral students; delivering master's programmes and professional training in situ, mainly in the field of economics and social sciences, and French as a foreign language; implementing projects for agricultural, agri-food and rural development in the Mediterranean region.



The FLE centre has also been awarded the "Qualité français langue étrangère" quality label.



As a public higher education institution accredited by the Haut Conseil de l'évaluation et de la recherche de l'enseignement supérieur (HCERES, i.e. the French High Council for evaluation and research in higher education), CIHEAM Montpellier meets the obligations of the quality certification. CIHEAM Montpellier is recognised by the Ministry of Labour, Employment and Integration in its public list of training providers (L.6351-7-1 of the Labour Code). As such, our training courses are eligible for continuing vocational training funding.

## QUALITY ACCOMMODATION

The Mediterranean campus is managed with a sustainable development approach: surrounded by woodlands covering more than 7 hectares, the residence was built according to HQE (High Environmental Quality) specifications. The Campus can accommodate around 100 students and is equipped to receive people with reduced mobility.

[ResaCampus@iamm.fr](mailto:ResaCampus@iamm.fr)  
+33 (0)4 67 04 60 00



## The CIHEAM Montpellier key figures

**29** ongoing projects  
with the collaboration of  
**35** countries

**5** MASTERS  
and Master of science

**1,000**  
students trained  
per year

more than  
**60**  
years of  
experience

more than  
**15**  
countries  
represented

Mediterranean park of  
**7**  
hectares

**95%**  
of whom  
are international  
students



# MASTER'S PROGRAMME MAP

<b>MASTER CGAT</b> Climate change, agricultural and territorial management	<b>MASTER CDVALES</b> Sustainable agri-food value chains: logistics, environment, strategies	<b>MASTER MIDAS</b> Mediterranean farming system design for a sustainable food-system
<p><b>July - August</b>  <b>E-learning prerequisites</b>            Micro-economics, cartography, French</p> <p><b>September</b>  <b>On-site prerequisites</b>            Micro-economics, accounting, cartography, agronomy and informatics</p> <p><b>September - December</b>  <b>Module 1</b>            Integrated and sustainable development of territories</p> <p><b>September</b>  <b>Module 2</b>            Politics, climate and territorial agricultural capital</p> <p><b>October</b>  <b>Module 3</b>            Mediterranean agriculture in the context of climate change</p> <p><b>October – November</b>  <b>Module 4</b>            Diagnosis and cartographic analysis of rural areas</p> <p><b>November – December</b>  <b>Module 5</b>            Monitoring and evaluation tools for territorial resources</p> <p><b>January</b>  <b>Module 6</b>            Agricultural business management</p> <p><b>Module 7</b>            Modeling and decision support</p> <p><b>January - February</b>  <b>Module 8</b>            Stakeholders and natural resource management</p> <p><b>October - March</b>  <b>Module 9</b>            Research workshop: problematics and methods</p> <p><b>Module 10</b>            English language course</p> <p><b>March</b>  <b>Thematic workshop and project development</b></p> <p><b>April – September</b>  <b>Research thesis or internship with thesis writing</b></p>	<p><b>July - August</b>  <b>E-learning prerequisites</b>            French</p> <p><b>September</b>  <b>On-site prerequisites</b>            Excel</p> <p><b>September - December</b>  <b>Module 1</b>            Stakes, challenges and stakeholders of the ecological transition and the circular economy</p> <p><b>September-October</b>  <b>Module 2</b>            Agri-food value chains and sustainability: concepts and methods</p> <p><b>October-November</b>  <b>Module 3</b>            Technical aspects of logistics, innovations, sustainability and cost management</p> <p><b>November-December</b>  <b>Module 4</b>            Regulations, social responsibility standards for logistics and the environment</p> <p><b>December-January</b>  <b>Module 5</b>            Distribution and supply chain management</p> <p><b>January - February</b>  <b>Module 6</b>            Company organisation, human resources management and corporate social responsibility</p> <p><b>February - March</b>  <b>Module 7</b>            International trade and marketing</p> <p><b>October - March</b>  <b>Module 8</b>            Research methods in social science</p> <p><b>Module 9</b>            English language course</p> <p><b>March - September</b>  <b>Internship project, internship and Master's thesis</b></p>	<p><b>September</b>  <b>Module 1</b>            Prerequisites and prospective analysis in relation to climate issues</p> <p><b>October</b>  <b>Module 2</b>            Transition of agricultural systems under socio-economic and environmental uncertainty</p> <p><b>November</b>  <b>Module 3</b>            Modeling of Mediterranean Cropping Systems</p> <p><b>December</b>  <b>Module 4</b>            Methods of data collection and analysis</p> <p><b>January – February</b>  <b>Module 5</b>            Modeling of Mediterranean Agricultural System</p> <p><b>February</b>  <b>Module 6</b>            Multi-agent analysis for designing resilient agricultural systems</p> <p><b>January – March</b>  <b>Module 7</b>            Research workshop: issues and methods</p> <p><b>March</b>  <b>Module 8</b>            Master thesis preparation</p> <p><b>October - March</b>  <b>Module 9</b>            Foreign language: French</p> <p><b>April - September</b>  <b>Internship and Master thesis</b></p>



**MASTER ECODEVA**  
**Agricultural, environmental development economics and food**

---

**September - October**

**Course unit 1 - Thematic courses**

- Module 1 - Economics and agricultural, food and rural policies
- Module 2 - Environment economics and policies
- Module 3 - Development economics and policies
- Module 4 - Circular economy and food systems

**October - November**

**Course unit 2 - Methodological courses (3 elective modules)**

- Module 1 - Applied econometrics
- Module 2 - Modeling of the agricultural and environmental policies
- Module 3 - Qualitative and quantitative methods
- Module 4 - Topic in experimental and behavioral economics

**October - November**

**Course unit 3 - Theoretical courses (3 elective modules)**

- Module 1 - New institutional economy
- Module 2 - Economic public calculation
- Module 3 - Economical sociology and anthropology
- Module 4 - Theoretical approaches in management sciences

**November - December**

**Course unit 4 - Specialization courses (3 elective modules)**

- Module 1 - Consumers, food and sustainability
- Module 2 - Institutions and development
- Module 3 - Coordination in the firms and agri-food chains
- Module 4 - Information and environmental certifications
- Module 5 - Economics of biodiversity and natural resources

**February - March**

**Course unit 5 - Research seminars**

**February - March**

**Tutorials as guidelines to research process**

**April - September**

**Research thesis and defense**



**CIHEAM**  
**MONTPELLIER**



## Specialisation Territorial planning and local development

Master's programme:

# CLIMATE CHANGE, AGRICULTURAL AND TERRITORIAL MANAGEMENT (CGAT)

Joint accreditation with Paul Valéry Montpellier 3 University (UPVM).

This Master's degree offers the possibility to pursue doctoral studies



## OBJECTIVE

This postgraduate course is designed for holders of a university degree with at least four years of higher education (M1 or engineering degree) and with an initial training and/or professional experience in the field of agricultural and rural development (agronomy/agriculture, economics, geography, ecology).

The programme investigates the impacts of climate change on the management of rural territories, their agriculture and their resources. It investigates the functions of territorial agriculture and its adaptation to new constraints and standards within the context of global change.

The objective is to provide professional training in the development of new technologies for agriculture and analyse territorial adaptation policies and projects in agricultural and rural sectors. In practical terms, the training prepares graduates for jobs such as development manager for local authorities and chambers of agriculture, project and research manager for international organisations, and software designer for training in private enterprises. It enables students to master the new models and tools that structure territorial public action and farm management decisions.

The CIHEAM Montpellier training course helps economists, ecologists, geographers and agricultural engineers to learn to work together, by providing them with the common language required for teamwork. It offers both an apprenticeship in theoretical and practical tools and the acquisition of professional experience (individual and group courses), bringing trainees into contact with local actors and real-life situations so that they may be operational by the end of the course.

### The course teaches:

- **Knowledge:** through the analysis of the technical and economic operating of a farm and the diagnosis of an agricultural territory within the context of climate change.
- **Know-how:** implementation of decision-support methods, forward analysis and strategic steering in individual and collective advisory approaches. Conducting surveys, map construction, landscape and spatial analysis, statistical analysis of data, analysis of territorial policies. Development of optimisation models for production choices at farm and regional level. Coupling of biophysical and economic models for decision-making support in the management of natural resources and diffuse pollution in agriculture.
- **Soft skills:** working in a multidisciplinary team, at the interface between technical and socio-economic aspects.

## MASTER 2 PROGRAMME (60 ECTS)

### E-learning prerequisites (July-August)

- Refresher training in micro-economics, cartography and French.

### On-site prerequisites (September)

- Refresher training in micro-economics, accounting/financial analysis, cartography, agronomy and informatics.

### Module 1: Integrated and sustainable development of territories (September-December) – 2 ECTS

- The perspective of territorial and spatial planning and management.

## ORGANISATION

**Master 2 (5 years of higher education) – 12 months (from Sept. 26 to Sept. 27)**

Theoretical and practical modules	34 ECTS
Internship and dissertation	26 ECTS

**Master of Science (6 years of higher education) – Additional 12 months**

Master of Science thesis	60 ECTS
--------------------------	---------

## ADMISSION CRITERIA

The course is open to economists, agronomists, geographers and ecologists who want to specialise in agricultural and territorial management in the face of climate change.

Admission level: at least a 4-year university degree or any qualification giving access to postgraduate studies.

Prerequisites in economics are required.

## TUITION AND REGISTRATION FEES

Tuition fee: 3 527 € (applicants coming from a CIHEAM member country\* are exempt from these fees)

Registration fee: 250 €

## SCHOLARSHIPS

Scholarships are available for candidates from CIHEAM member countries\* to cover subsistence and training costs.

## APPLICATION

Application to be submitted online **before 24 March 2026**: <https://apply.iamm.ciheam.org/>

## NUMBER OF STUDENTS PER COHORT

Average: 20 students

## DEGREES

Master's degree awarded by CIHEAM Montpellier and UPVM

Master of Science degree awarded by CIHEAM

## EMPLOYMENT RATE AT 24 MONTHS

Employment rate: 84 %

Study continuation rate: 17 %

## MAIN CAREER OPPORTUNITIES

Territorial Planner, project Manager (NGOs, International Organizations), Consultant (Consulting Firms), Agricultural Software Designer

\* Albania, Algeria, Egypt, France, Greece, Italy, Lebanon, Malta, Morocco, Portugal, Spain, Tunisia, Turkey.

**Module 2: Politics, climate and territorial agricultural capital (September) – 2 ECTS**

- Climate, sustainability and renewal of public action at the territorial level.
- Mobilising the concepts of vulnerability, adaptation and adaptive capacity.
- Approaches to agroecology and analyses of territories and agricultural households based on multiple assets.

**Module 3: Mediterranean agriculture in the context of climate change (October) – 2 ECTS**

- Sustainability of Mediterranean agriculture under climate change.
- Landscape analysis and production systems typologies: field trips in the Cévennes and in Camargue.
- Public agricultural and rural policies in the context of climate change.

**Module 4: Diagnosis and cartographic analysis of rural areas (October - November) – 5 ECTS**

- Using cartography for the territorial diagnosis and decision aid tool.
- Understanding a rural territory based on vulnerability and adaptive capacity approaches
- Learning rapid diagnostic methods applied to a rural area.

**Module 5: Monitoring and evaluation tools for territorial resources (November-December) – 4 ECTS**

- Data analysis.
- Territorial ecological accounting.
- Economic valuation of non-market assets.

**Module 6: Agricultural business management (January) – 4 ECTS**

- Mastering the techniques of farm business management using digital technology. Agri-environmental measures and management of externalities.
- Drawing up a development plan for a farming business using a multi-periodic simulator
- Operational experience in the field with farmers and professional representatives.

**Module 7: Modeling and decision support (January) – 2 ECTS**

- Optimisation and decision support model for farms.
- Biophysical models and bio-economic modelling

**Module 8: Stakeholders and natural resource management (January-February) – 4 ECTS**

- The economics of the environment and natural resources, environmental policy instruments.
- IWRM (Integrated Water Resource Management): irrigation techniques and control of inputs, management of water supply and demand.
- The transition from farm models to regional aggregated models
- Analysis of the interaction between individual and collective choices at the regional level.
- Simulation game for negotiating and evaluating collective choices in a small agricultural region

**Module 9: Research workshop: problematics and methods (October - March) – 2 ECTS**

- Research methodology: formulation of a problematic, conceptual framework and development of a working methodology.
- Training in documentary research.

**Module 10: English language course (October - March) – 3 ECTS**

Oral and written expression adapted to an academic and/or professional context

**Thematic workshops and project development (March) – 4 ECTS**

Preparation of a research project to structure the different aspects of the individual internship: fieldwork and analysis.

**Research thesis or a 3- to 6-month internship and the writing of a dissertation (April - September) – 26 ECTS**

This internship is carried out within the framework of development structures, consultancy firms, NGOs, etc. The internship continues on to the writing of a thesis and its presentation for the Master's degree.

**MASTER of Science (60 ECTS)**

**CIHEAM Master of Science thesis**

Writing and defense.

**COORDINATORS**

Tristan BERCHOUX: (33) (0)4 67.04.60.65 - berchoux@iamm.fr

Philippe LE GRUSSE: (33) (0)4 67.04.60.23 - legrusse@iamm.fr

Mélanie REQUIER-DESJARDINS: (33) (0)4 67.04.31.88 - requier@iamm.fr



**CIHEAM  
MONTPELLIER**



## Specialisation Management

Master's programme:

# SUSTAINABLE AGRI-FOOD VALUE CHAINS: LOGISTICS, ENVIRONMENT, STRATEGIES (CDVALES)

Joint accreditation with the University of Montpellier - Montpellier Management (MOMA) and L'Institut Agro Montpellier



## OBJECTIVE

This programme is a postgraduate course designed for holders of a university degree with at least four years of higher education (M1 or engineering degree) and with initial training and/or professional experience in the field of agricultural and rural development (agronomy/agriculture, economics).

Within the current context of ecological, food and social transition, agri-food value chains, which form the food system, are evolving towards innovative and more sustainable economic models. The challenge for the actors of agri-food value chains is to reconcile economic, social and environmental performance.

Mobilising multidisciplinary approaches, this professional training programme targets the acquisition and command of theoretical concepts, analysis and sustainability evaluation methods, and their application to professional situations. These skills are developed with the aim of understanding and analysing: i) the changes in the socio-institutional environment, ii) stakeholder behaviours and strategies, iii) modes of stakeholder organisation and coordination from upstream to downstream, from production (agricultural, raw materials), processing and distribution to the end consumer, iv) the evaluation of performance and value creation v) and the role of logistics as a cross-cutting strategic function of supply chains. The objective is to train and specialise future executives and project managers in the management and coordination of value and supply chains, from farm to fork to support the ecological transition of agri-food chains.

### The course teaches:

- **Knowledge:** analysing food systems and agri-food value chains; observing and analysing stakeholder environments; assessing the sustainability of agri-food sectors and supply chains; familiarity with the national and international regulations that form the socio-institutional framework for value chains, specialising in the management and coordination of supply chains.
- **Know-how:**
  - Drawing up a strategic diagnosis of a value chain
  - Ability to interface technical and socio-economic aspects
  - Develop a diagnosis and model logistics optimisation plans
  - Mobilise environmental and economic performance evaluation indicators for decision support
- **Soft skills:** working and communicating in a multidisciplinary and multicultural team, developing analytical rigour and a sense of responsibility, respecting scientific and ethical integrity.

## ORGANISATION

**Master 2 (5 years of higher education) – 12 months (from Sept. 26 to Sept. 27)**

Nine modules	30 ECTS
Internship and dissertation	30 ECTS

**Master of Science (6 years of higher education) – Additional 12 months**

Master of Science thesis	60 ECTS
--------------------------	---------

## ADMISSION CRITERIA

The course is open to economists, agronomists, geographers and ecologists who want to specialise in economics.

Admission level: at least a 4-year university degree or any qualification giving access to postgraduate studies.

## TUITION AND REGISTRATION FEES

Tuition fee: 3 527 € (applicants coming from a CIHEAM member country\* are exempt from these fees)

Registration fee: 250 €

## SCHOLARSHIPS

Scholarships are available for candidates from CIHEAM member countries\* to cover subsistence and training costs

## APPLICATION

Application to be submitted online **before 24 March 2026**: <https://apply.iamm.ciheam.org/>

## NUMBER OF STUDENTS PER COHORT

Average: 20 students

## DEGREES

Master's degree awarded by CIHEAM Montpellier and the University of Montpellier

Master of Science degree awarded by CIHEAM

## EMPLOYMENT RATE AT 24 MONTHS

Employment rate: 95 %

Study continuation rate: 0 %

## MAIN CAREER OPPORTUNITIES

Executive in supply chain management, logistics, and procurement ; Sustainability and CSR analyst or consultant ; Socio-economic and sustainable performance research officer.

Fields of practice: companies, NGOs, consulting firms, research, public administration.

Qualified to pursue doctoral studies.

\* Albania, Algeria, Egypt, France, Greece, Italy, Lebanon, Malta, Morocco, Portugal, Spain, Tunisia, Turkey.

## MASTER 2 PROGRAMME (60 ECTS)

### Excel training prerequisites (September)

**Module 1: Stakes, challenges and stakeholders of the ecological transition and the circular economy (September-December) – 2 ECTS**

- Principles and concepts of sustainable development
- The interest of a multidisciplinary approach to the ecological transition
- Methodological approaches and benefits of the circular economy

**Module 2: Agri-food value chains and sustainability: concepts and methods (September-October) – 3 ECTS**

- Coordination and management of agri-food value chains, and the transition towards environmental and social sustainability
- Methods of sector analysis and stakeholder strategies: theoretical contributions from industrial economics and circular economy

**Module 3: Technical aspects of logistics, innovations, sustainability and cost management (October-November) – 5 ECTS**

- Understanding the logistics function as a strategic function of the company
- Familiarisation with information systems and data processing methods
- Learning methods to analyse logistics costs and economic and environmental performance indicators

**Module 4: Regulations, social responsibility standards for logistics and the environment (November-December) – 3 ECTS**

- Learning about the conventions, contracts and standards governing international logistics
- Familiarisation with the regulatory frameworks relating to the energy and ecological transition, applied to logistics at different scales (territorial, urban, etc.).
- Understanding national and international regulations for social responsibility in favour of sustainable development, the circular economy and the fight against food wastage

**Module 5: Distribution and supply chain management (December-January) – 3 ECTS**

- Understanding the functioning of distribution channels, the role of stakeholders and coordination arrangements
- Understanding the challenges of digitalisation

- Learning supply methods for optimised and sustainable flow management
- Learning the basics of waste management in agri-food supply chains

**Module 6: Company organisation, human resources management and corporate social responsibility (January-February) – 4 ECTS**

- Understanding the process, tools and main models for the strategic analysis of organisations
- Understanding the stakes of human resources management and corporate social responsibility
- Acquiring team management skills

**Module 7: International trade and marketing (February-March) – 3 ECTS**

- Learning the basics of marketing associated with creation of value for the company
- Understanding the stakes of a distribution policy and an international communication strategy
- Identifying the strategic behaviours of companies for products obtained by sustainable production processes
- Familiarisation with quality signs, standards and international sustainability certifications.

**Module 8: Research methods in social science (October-March) – 4 ECTS**

- Formulation of a scientific approach
- Training in scientific documentary research

**Module 9: English language course (October - March) – 3 ECTS**

Oral and written expression adapted to an academic and/or professional context

**Internship project, internship and Master's thesis (March-September) – 30 ECTS**

- Development of a project outlining the internship tasks within a scientific framework
- Individual internship in a professional setting
- Writing and defense of the Master's thesis (M2)

## MASTER OF SCIENCE (60 ECTS)

**CIHEAM Master of Science thesis**

Writing and defense.

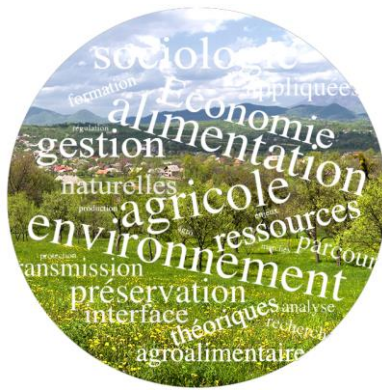
### COORDINATORS

Iciar PAVEZ: (33) (0)4 67 04 60 16 - pavez@iamm.fr

Paolo PROSPERI: (33) (0)4 67 04 60 85 - prosperi@iamm.fr



CIHEAM  
MONTPELLIER



## Specialisation Economics

Master's programme:

# AGRICULTURAL, ENVIRONMENTAL DEVELOPMENT ECONOMICS AND FOOD (ECODEVA)

co-accredited with the University of Montpellier (UM) and L'Institut Agro Montpellier.  
This Master offers the possibility to pursue a research career (PhD studies).



UNIVERSITÉ  
DE MONTPELLIER



L'INSTITUT  
agro Montpellier



## OBJECTIVE

This educational programme is aimed at students who wish to take on roles requiring autonomy, the ability to show individual initiative, and strong knowledge in economic sciences. Focused on delivering fundamental theoretical and methodological knowledge (both quantitative and qualitative), it places significant emphasis on the use of advanced modelling techniques in contemporary economic analysis, as well as on approaches from institutional economics, management sciences, and economic sociology.

This Master's degree prepares students—through research and teaching—for a variety of professional careers in the fields of economic and management research and studies applied to development in the agricultural, agri-food, and rural sectors, as well as in the areas of environmental management and natural resource management.

It enables students to acquire advanced expertise in the fields of agri-food sectors and natural resource management through the available specialisations.

Prerequisite courses are offered in September.

## MASTER 2 PROGRAMME (60 ECTS)

The training begins with a session of common courses enabling students to acquire the general thematic knowledge and the necessary methodological and theoretical bases before starting the more operational courses provided in the optional courses. It ends with seminars and the redaction and presentation of a research report.

### COURSE UNIT 1 - Thematic courses (3 ECTS)

#### Module 1: Economics and agricultural, food and rural policies

Objective: to make a synthesis of the main economics aspects of the agricultural and agri-food area and its management by the public policies.

#### Module 2: Environment economics and policies

Objective: to enable students to get the basis of economic analysis of environmental and of natural resources management issues.

#### Module 3: Development economics and policies

Objective: to develop the theories of economic development in the framework of agri-food and rural development. This course draws a parallel between contemporary problematics and theories.

#### Module 4: Circular economy and food systems

Objective: to provide the theoretical foundations, the concepts and necessary methods to the understanding and analysis of the food system and its dynamic, in France and in the world.

## ORGANISATION

### Master 2 (5 years of higher education)

12 months (from Sept. 26 to Sept. 27)

Fifteen units 34 ECTS

Internship and report 26 ECTS

### Master of Science (6 years of higher education)

Additional 12 months

Master of Science thesis 60 ECTS

## ADMISSION CRITERIA

This course is open to economists or agronomists wishing to specialise in agricultural, environmental development economics and food.

Admission level: at least a 4-year university degree or any qualification giving access to postgraduate studies.

Prerequisites in economics are required.

## TUITION AND REGISTRATION FEES

Tuition fee: 3 527 € (applicants coming from a CIHEAM member country\* are exempt from these fees)

Registration fee: 250 €

## SCHOLARSHIPS

Scholarships are available for candidates from CIHEAM member countries\* to cover subsistence and training costs

## APPLICATION

Application to be submitted online **before 24 March 2026**:  
<https://apply.iamm.ciheam.org/>

## NUMBER OF STUDENTS PER COHORT

Average: 7 students enrolled at CIHEAM Montpellier, within a cohort of 18 students (UM, Institut Agro).

## DEGREES

Master's degree awarded by CIHEAM Montpellier, UM and L'Institut Agro Montpellier.

Master of Science degree awarded by CIHEAM

## EMPLOYMENT RATE AT 24 MONTHS

Employment rate: 73 %

Study continuation rate: 21 %

## MAIN CAREER OPPORTUNITIES

Pursuing doctoral studies in economics, management, or research engineering ; Consultant in France or abroad ; Economic or sustainable development analyst in the public or private sector, in France or abroad (Ministries, Chambers of Agriculture, professional associations, INAO, etc.)

\* Albania, Algeria, Egypt, France, Greece, Italy, Lebanon, Malta, Morocco, Portugal, Spain, Tunisia, Turkey.

## **COURSE UNIT 2 - Methodological courses (each student has to chose 3 modules – 3 ECTS /module)**

### **Module 1: Applied econometrics**

Objective: to introduce students to a stochastic approach of complex phenomenon and to the use and processing of real data. More particularly, the course aims at leading students to carry out, by themselves, an empirical economic work through an individual project.

### **Module 2: Modeling of the agricultural and environmental policies**

Objective: to master the mathematical programming techniques and know how to use them to develop optimization models.

### **Module 3: Qualitative and quantitative methods**

Objective: to provide elements to economists who want to integrate a qualitative dimension in their future research work, through debates on field study matters.

### **Module 4: Topic in experimental and behavioral economics**

Objective: to study the main themes of experimental economics focussing on social interactions. This course analyses the behaviour of economic agents.

## **COURSE UNIT 3 - Theoretical courses (each student has to chose 3 modules – 3 ECTS /module)**

### **Module 1: New institutional economy**

Objective: to study the various trends of institutional economy (the “New institutional economy”, the “Property Rights Theories”, etc.), and to link them to the various objectives, research positions, hypothesis and methods used in the analysis of institutions.

### **Module 2: Economic public calculation**

Objective: to provide to students the basis of public policies and some notions on the “theory of incentives”.

### **Module 3: Economical sociology and anthropology**

Objective: to present the origins and construction elements of the political economy, from both a scientific and a political point of view. This course also studies the main evolutions in the European and Anglo Saxon bodies, in the framework of the “great sharing” between economy and sociology, and provides some examples of debates, especially the one of the “New economic sociology”.

### **Module 4: Theoretical approaches in management sciences**

Objective: to introduce to students the theoretical approaches in management sciences with an overview of different fields of management. A specific focus is placed on organisational theory, strategy and consumer theories, linking them with subsequent courses (entrepreneurship, etc.).

## **COURSE UNIT 4 - Specialization courses (each student has to chose 3 modules – 3 ECTS /module)**

### **Module 1: Consumers, food and sustainability**

Objective: to update knowledge on the debates about the sustainability of food systems, more specifically the questions of the contribution to the environment management and the social equity through a responsible consumption.

### **Module 2: Institutions and development**

Objective: to present some of the important applications to the agricultural and agri-food sectors, to provide courses of institutional economy.

### **Module 3: Coordination in the firms and agri-food chains**

Objective: to address coordination issues through the analysis of different cases that often raise questions about the food system sustainability (collective short supply chains, cooperatives, consumer participation in large-scale distribution, corporate social responsibility, etc.).

### **Module 4: Information and environmental certifications**

Objective: to understand the economic behaviour of companies and consumers relative to environmental issues and in particular differentiation strategies within the scope of “green” products. To understand that the policy measures can be implemented by a regulator (state, government, administration). As environmental certification plays a key role in providing consumers with information on environmental quality, there is a particular focus on the interaction between market prices and certification in the transmission of information.

### **Module 5: Economics of biodiversity and natural resources**

Objective: introduction to the economic analysis of the management of exhaustible natural resources (fossil fuels) and renewable resources (fisheries resources, forests).

## **COURSE UNIT 5 - Research seminars (2 ECTS /seminar)**

The students must choose 2 seminars out of the 4 that are proposed. These seminars deal with subjects related to researches from 3 teams involved in the Master (Mixed Research Units : MOISA, CEEM, Innovation) and can be oriented and developed to meet students specific needs for the preparation of their research master thesis.

### **Tutorials as guidelines to research process**

Objective: to prepare the students to the work that needs to be done during their research thesis. This class will enable each student to familiarize with the basic techniques related to a research work.

### **Research thesis and defense (26 ECTS)**

The research thesis is the result of the student’s personal work. Each student is supervised by a professor or a researcher involved in this Master. The main objective is to indicate the feasibility of a thesis project, insisting on the methods and tools of the selected discipline or disciplines. This work will be defended in front of a jury composed of the various disciplines part of the Master.

## **MASTER OF SCIENCE (60 ECTS)**

### **CIHEAM Master of Science thesis**

Writing and defense.

**CIHEAM Montpellier Scientific Coordinator**

Myriam KESSARI : (33) (0)4 67.04.60.36 - kessari@iamm.fr



**CIHEAM  
MONTPELLIER**



## Specialisation Economics

# MASTER'S PROGRAMME (Master 2 – Baccaureat +5 years) MEDITERRANEAN FARMING SYSTEM DESIGN FOR A SUSTAINABLE FOOD-SYSTEM (MIDAS)

Co-accredited with the University of Montpellier (UM) and L'Institut Agro Montpellier.



The programme is in partnership with the Universidad Polit cnica de Madrid (UPM), University of Thessaly (UTH), ICARDA, Faculty of Agriculture - Cairo University (CU), and Faculty of Agronomy - Lebanese University.



## OBJECTIVE

This Master's programme by the CIHEAM Montpellier focuses on the plot-farm-territory nexus in relation to socio-technical territorial dynamics, in a context of climatic uncertainty, socio-economic changes and natural resources' degradation. It has a strong international focus, and the language of study and assessment will be English. This one-year-study Master's programme is composed of 8 complementary modules and aims to address 3 major issues in relation with:

- Agricultural systems diversification and food security issues;
- Integrated assessment approach for designing innovative farming systems;
- Co-designing adaptation strategies to promote resilient and sustainable farming systems.

The CIHEAM Montpellier team is in collaboration with visiting professors/lecturers from the following international institutes for the elaboration of different modules and other aspects of the programme:

- Universidad Polit cnica de Madrid (UPM),
- Universitat Polit cnica de Valencia,
- International Center for Agricultural Research in the Dry Areas (ICARDA),
- Faculty of Agronomy - Lebanese University,
- Maison de la t l d tection - Montpellier,
- Leibniz Centre for Agricultural Landscape Research (ZALF),
- University of Milan (UM),
- University of Thessaly (UTH),
- Faculty of Agriculture - Cairo University (CU),
- University of Montpellier (UM),
- Ankara  niversitesi,
- Banque de France.

### This Master's programme will provide the students with the necessary:

- **knowledge** to identify the main socio-economic and environmental issues of Mediterranean rural territories,
- **know-how** for designing technical, economic and environmentally viable agricultural production systems by using conceptual, agronomic, and economic models and scenario simulations,
- **skills** to be able to work in multidisciplinary teams and to facilitate the interface between technical and socio-economic aspects.

## STRUCTURE

**Eight modules** **45 ECTS**  
**Internship and Master Thesis** **15 ECTS**

This Master's programme offers the opportunity to continue to the Master of Science of the CIHEAM (Baccalaureat +6 years) and to pursue PhD studies and a research career.

## LANGUAGE OF THE COURSES

English

## ADMISSION CRITERIA

The required academic level for admission is a minimum of 4 years of higher education (corresponding to 240 ECTS) in a university or a cycle of engineering in agronomy, economics or geography.

## TUITION AND REGISTRATION FEES

Tuition fee: 3 527   (applicants coming from a CIHEAM member country\* are exempt from these fees)

Registration fee: 250  

## SCHOLARSHIPS

Scholarships are available for candidates from CIHEAM member countries\* to cover subsistence and training costs

## APPLICATION

Application to be submitted online **before 24 March 2026**:  
<https://apply.iamm.ciheam.org/>

## NUMBER OF STUDENTS PER COHORT

Average: 18 students

## DEGREES

Master's degree awarded by CIHEAM Montpellier, in co-accreditation with the University of Montpellier (UM) and L'Institut Agro Montpellier.

Master of Science degree awarded by CIHEAM

## EMPLOYMENT RATE AT 24 MONTHS

Employment rate: 100 %

Study continuation rate: 43 %

## MAIN CAREER OPPORTUNITIES

Researcher / analyst in agricultural economics, food systems ;  
 Policy officer / programme manager in national or regional institutions ;  
 International expert / consultant in agricultural adaptation, technological innovation, or resource management.

\* Albania, Algeria, Egypt, France, Greece, Italy, Lebanon, Malta, Morocco, Portugal, Spain, Tunisia, Turkey.

## MASTER'S PROGRAMME (60 ECTS)

### Module 1: Prerequisites and prospective analysis in relation to climate change issues (September) – 2 ECTS

- Upgrade in economics (fundamentals in microeconomics and environmental economics),
- Upgrade in systems approach in agriculture,
- Prospective analysis in relation to climate change issues at a regional scale,
- Upgrade in Data analysis & Statistics.

### Module 2: Transition of agricultural systems under socio-economic and environmental uncertainty (October) – 4 ECTS

- Analyze the structure and assess the performance of the dominant production systems in the Mediterranean,
- Map agricultural systems and their impact on the environment,
- Conceptualize and represent complex agricultural systems,
- Prospective analysis in relation to climate change issues at a global scale.

### Module 3: Modeling of Mediterranean Cropping Systems (November) – 5 ECTS

- Integration in the modeling approaches of agrosystems under high water stress,
- Master the use of mechanistic and dynamic cropping systems models,
- Master the development and testing of a water balance models.

### Module 4: Methods of data collection and analysis (December) – 2 ECTS

- Establishment of the appropriate framework for data collection and analysis,
- Integration in questionnaires' design, data collection methods, sampling design, dealing with data quality, making estimates and combining data from different sources,
- Training of data analysis in different environments.

### Module 5: Modeling of Mediterranean Agricultural Systems (January - February) – 5 ECTS

- Integration in the basic concepts of Environmental Economics and into the role of mathematical programming models as a tool for decision making,

- Integration in the different Mediterranean agricultural systems by taking into account a significant amount of technical, agronomic and economic data,
- Learn the development of bio-economic models by using GAMS language,
- Design and implement scenario simulations in different socio-economic and environmental contexts,
- Analyze the resilience of Mediterranean agricultural systems through multi-criteria and multi-scale analysis.

### Module 6: Multi-agent analysis for designing resilient agricultural systems (February) – 3 ECTS

- Model sustainable food systems: from production to nutrition,
- Regional modeling and resilience analysis,
- Integration to companion modeling and multi-agent systems for the assessment of agricultural territories.

### Module 7: Research workshop: issues and methods (January - March) - 3 ECTS

- Literature review,
- Scientific construction of a research project,
- Writing of scientific articles,
- Participation in seminars.

### Module 8: Master thesis preparation (March) – 3 ECTS

- Preparation of the internship's project,
- Preparation for thesis work: defining research context and methodological foundations

### Module 9: Foreign language - French (October - March) – 3 ECTS

- Oral and written expression adapted to an academic and / or a professional context.

### Internship and Master thesis (April - September) – 30 ECTS

- Elaboration of internship,
- Reduction of Master Thesis,
- Defence of Master Thesis

## MASTER OF SCIENCE (60 ECTS)

### CIHEAM Master of Science thesis

Writing and defense

### Scientific coordinators:

Hatem BELHOUCLETTE: (33) (0)4 67.04.39.96 - belhouchette@iamm.fr

Amélie BOURCERET: (33) (0)4 67.04.60.48 – bourceret@iamm.fr

Georgios KLEFTODIMOS: (33) (0)4 67.04.60.20 - kleftodimos@iamm.fr



CIHEAM  
MONTPELLIER



## Continuous Professional Training in the Mediterranean

A permanent offer - some specialized themes

For a life-long update of professional knowledge

### OBJECTIVE

The CIHEAM Montpellier is a continuous professional training operator for young researchers and executives in agriculture, food industry and rural sustainable development in the Mediterranean. Drawing on its extensive experience in terms of education, cooperation and promotion of partnership network in the Mediterranean, the institute offers training courses adapted to the needs of both individuals and organizations, with tailored course contents and flexible educational methods.

### OUR ASSETS

#### MEET THE EVOLUTION OF THE INTERNATIONAL CONTEXT

Our training programmes focus on themes related to the current challenges faced by the Mediterranean basin, such as:

- Food security for populations and the development of sustainable farming systems
- The evolution of rural societies facing economic and climate change
- Pressure on natural resources and climate change
- Progress in communication and training techniques

#### MEET THE PARTICIPANTS' NEW EXPECTATIONS

Our training courses are based on a dynamic pedagogy that includes:

- Exchanges with professionals
- Fresh contents
- Specialized speakers
- Various dissemination methods
- Active educational methods

### OUR PERMANENT OFFER

Our training courses address four specialized topics:

- Modeling and decision-making tools in agriculture and environment
- Territories economy and value chains
- Communication tools for the promotion of research works

#### INTEGRATED ASSESSEMENT OF AGRICULTURE AND SUSTAINABLE DEVELOPMENT (LANGUAGE OF THE COURSE: ENGLISH)

In this course, different model-chain approaches are used as examples to present how concepts, tools and models (conceptual and numerical) can be integrated to assess complex agricultural systems and sustainable development. The course is problem-oriented, so all lectures are linked to practical applications, such as the impact of climate change on the resilience of farming systems in the Mediterranean area. Models utilized for these practical applications will be presented and discussed, but gaining detailed understanding of specific model components is not the objective of this course. At the end of the course, participants should understand how an integrated research framework and its individual components contribute to the integrated assessment of a problem.

Besides a series of plenary presentations by speakers, a number of interactive activities should allow participants to discuss general and detailed issues with the specialists and other participants.

Contact et information: [belhouchette@iamm.fr](mailto:belhouchette@iamm.fr)  
+ 33 (0)4.67.04.39.96

### ORGANIZATION

Three types of course are offered:

#### > Trainings based on special themes:

These specialized courses can be organized upon request, depending on the needs of our partners.

**Average duration of a specialized course:** from 3 to 5 days.

#### > A la carte modules

The Master programmes modules can be followed individually.

**Duration of a module:** 1 week to 1 month.

#### > Off-site short training courses:

The CIHEAM Montpellier adapts its services to meet the needs of its partners and organizes off-site training sessions.

**Average duration of an off-site session:** from 3 to 5 days.

### ELIGIBILITY/FEES/PAYMENT

The eligibility depends on the options selected by the candidate.

You will find all the information regarding the dates of the training sessions, the detailed content of the courses and the payment terms on our website:

[www.iamm.ciheam.org/fr/education/fpc](http://www.iamm.ciheam.org/fr/education/fpc)

### CONTINUOUS PROFESSIONAL TRAINING'S MANAGER:

Anne COBACHO

(33) (0)4 67.04.60.11

[cobacho@iamm.fr](mailto:cobacho@iamm.fr)

## **OLYMPE : A DATABASE AND A DECISION-MAKING TOOL IN AGRICULTURE**

The objective of this crash course on the Olympe database is the mastering of this modeling tool for agricultural holdings through the construction of a technicoeconomic model, allowing a multi-annual analysis of farmers' strategies. This tool enables the user to measure the impact of a technical decision-making and the importance of the economic risk. It also brings a prospective vision on the choice of future production systems.

**Contact and information:** [legrusse@iamm.fr](mailto:legrusse@iamm.fr)

+ 33 (0)4 67.04.60.23

## **MOBILIZING GEOGRAPHIC INFORMATION TO MAP YOUR DATA WITH QGIS SOFTWARE**

This training aims to introduce participants to the analysis of geographic information for conducting a pre-diagnosis of agricultural, economic, and sociodemographic dynamics in a rural area. It demonstrates, through the creation of thematic maps, how to communicate complex information to assist in land management.

The training provides the basis in geographic information processing and hands-on experience with GIS (Geographic Information Systems) software for spatializing data. Participants are guided in using QGIS, a flagship software in the geomatics world that supports diagnostics for land management projects and aids decision-making in agriculture and the environment. Due to its user-friendly interface, QGIS is also an ideal tool for beginners in GIS.

This training equips participants with basic skills to leverage their "business" data within a GIS:

- Creation of a project using QGIS
- Selection of spatial elements based on one or multiple criteria
- Creation of new fields and indicators
- Proficiency in attribute joins for geolocating information
- Analysis tools for spatially cross-referencing data
- Development of thematic maps

**Contact and information:** [cobacho@iamm.fr](mailto:cobacho@iamm.fr)

+ 33 (0)4 67.04.60.11

## **ANALYSIS OF THE AGRICULTURAL AND AGRIFOOD SECTORS AND VALUE CHAINS: METHODS AND APPLICATIONS**

The objective of this course is to provide tools for the understanding and analysis of a sector functioning in order to:

- Understand the interdependence mechanisms, the power relations, the conflicts and the issues which characterize the economic agents of a sector, as well as the creation of value along the supply chain.
- Be able to develop sectors strategies and policies based on integrated view.
- Identify the relations, complementarities and antagonisms between the chains, the territorial and the sectorial approaches.

- Raise the actors awareness of the interest of the chain approach for an inclusive territorial development.

**Contact and information:** [cobacho@iamm.fr](mailto:cobacho@iamm.fr)

+ 33 (0)4 67.04.60.11

## **SOME EXAMPLES OF DELOCALIZED SHORT-DURATION AND A LA CARTE COURSES**

### **PHYTOSANITARY PRACTICES MANAGEMENT FROM THE PLOT TO THE TERRITORY: SIMPHY, A SIMULATION GAME FOR DECISION-MAKING**

This tool simulates health and environmental risks related to practices changes on a territory through a real-life situation. It enables a direct dialogue between the participants and the concertation process learning.

It is recognized by the French Commissioner-General for Sustainable Development as an innovative tool for the actors involvement in the processes of assessment and design of phytosanitary risks management measures.

**Contact and information:** [legrusse@iamm.fr](mailto:legrusse@iamm.fr)

+ 33 (0)4 67.04.60.23

### **INTEGRATION OF CLIMATE CHANGE (CC) AND ENVIRONMENTAL ISSUES IN THE DESIGN, ELABORATION AND ASSESSMENT OF SUSTAINABLE RURAL DEVELOPMENT PROJECTS (IN COLLABORATION WITH UNIDO and ADA MOROCCO)**

This tailor-made training was intended for executives of the Moroccan Ministry of Agriculture with the following objectives:

- To understand CC concepts, characteristics and impacts on the agricultural sector and on productive systems,
- To identify existing public policy responses and tools to mitigate the CC impacts and promote environmentally friendly approaches,
- To identify operational tools to improve the efficiency of input management and build action plans that include CC into agricultural and rural development projects and efficiency,
- To understand local production valuation tools and approaches environmentally friendly to consumers.

**Contact and information:** [cobacho@iamm.fr](mailto:cobacho@iamm.fr)

+ 33 (0)4 67.04.60.11

### **APPROACHES AND METHODS OF DESIGN, ANALYSIS AND ASSESSMENT OF THE PERFORMANCE OF AGRICULTURAL PRODUCTION SYSTEM TO ADDRESS CLIMATE CHANGE AND SOCIO-ECONOMIC ISSUES & USE OF TOOLS INTENDED FOR AGRICULTURAL CONSULTING**

in collaboration with the Agricultural University of Tirana (Albanie)

#### **Montpellier**

Public: lecturers-researchers and deans of the Agricultural University of Tirana faculties

**Contact and information:** [cobacho@iamm.fr](mailto:cobacho@iamm.fr)

+ 33 (0)4 67.04.60.11



**CIHEAM  
MONTPELLIER**



# French Language Centre



« French Language Quality » quality label



## OBJECTIVE

The objective is to develop a sufficient knowledge of French language, to foster a good socio-cultural and professional integration and/or to undertake a university training in France.

## PROGRAMME

Created in 1979, the French Language Centre (CFLE) of the International Centre for Advanced Mediterranean Agronomic Studies (CIHEAM) provides the following training sessions:

### SUMMER COURSE

(8 – 15 students)

This course consists of 20 hours of lessons per week and may last from 2 to 10 weeks, from July to September.

#### > General French : oral and written communication, civilization

Fees: 2 weeks = 490 € / 4 weeks = 870 €  
6 weeks = 1 200 € / 8 weeks = 1 520 €  
10 weeks = 1 720 €

### INTENSIVE GROUP INSTRUCTION

(4 – 15 students) October-June

#### > 15h / week

Fees: 14 weeks = 1 730 € / 28 weeks = 3 310 €

#### > 9h / week

Fees: 14 weeks = 1 300 € / 28 weeks = 2 460 €

### INDIVIDUALIZED INSTRUCTION

According to this formula, courses duration and contents are determined after an assessment of the student's needs.

Packs 4h = 150 € / 10h = 370 € / 15h = 530 € / 20h = 640 €

### PREPARATION FOR DELF OR DALF EXAM

(group of 6 students minimum)

This course consists of 20 hours of lessons per week and may be of 2 weeks to 10 weeks duration.

Fees: 250 € /week

### NIGHT GROUP INSTRUCTION

3 sessions: 2h, 4h or 6h a week

Schedule: 5.30 pm to 7.30 pm

#### > Sessions: October-December / January-March / April-June

Fees: 135 € / 20 h (student fare)

### SCIENTIFIC FRENCH

General and scientific French (life sciences, agronomy), courses providing the level required for communication within the academic environment.

Fees: 260 € /week – discounts from 4 weeks on

### TRAINING OF TRAINERS

Duration: 2 weeks - 20h per week

Fees: 590 € / 2 weeks, for groups of 3 students minimum

## ADMISSION

**Age:** 18 minimum

**Enrolment fees:** included in our prices except for the scientific French

Proof of financial resources and a certificate of individual health and hospital insurance coverage are to be provided

## CERTIFICATION

Each training leads to the establishment of a training certificate specifying the level achieved

## CONTACT

Yamina DJENKAL-BENDAHMANE

(33) (0)4 67.04.60.02 or 60.70

[cfle@iamm.fr](mailto:cfle@iamm.fr)

[www.fle-montpellier.com](http://www.fle-montpellier.com)

NOTE: Requests for courses are carefully examined and arrangements are made to tailor instruction to students' needs ; they are likely to entail a modification of fees as they depend on the number of hours requested and the number of students.



CIHEAM  
MONTPELLIER



Sharing Knowledge, Feeding the Future

3191 Route de Mende, CS 43999, 34093 Montpellier Cedex 5, France  
Tél. : (33) 04 67 04 60 00 – [contact@iamm.fr](mailto:contact@iamm.fr)



# Support to Mediterranean doctoral studies

NETWORK RESEARCH, DOCTORAL PLATFORM

## OBJECTIVE

The CIHEAM Montpellier has always been known for its tradition of welcoming doctoral students as well as teachers and associated researchers for a short scientific stay, or on sabbatical leave, or even within the framework of research or cooperation programmes.

## THE CIHEAM MONTPELLIER, WELCOMING DOCTORAL STUDENTS

Doctoral students admitted in the **Mediterranean Laboratory in Economics and Social sciences (LAMES)** at the CIHEAM Montpellier are inserted into the Institute's research teams. Thus, they benefit from a scientific support from the CIHEAM Montpellier teachers as well as the Institute's available facilities (offices, class rooms, Documentation Centre, occasional financial support).

Doctoral stays may be of short or medium duration depending on the supervision and fieldwork required for the thesis. The length that doctoral students may stay at CIHEAM Montpellier will also depend on where they are registered for their thesis:

### > A student registered at a university in a partner country

whose doctoral work is integrated into a collaborative project with the CIHEAM Montpellier, can be received for several short stays occurring during his thesis preparation.

### > A student registered at a French university

having as thesis supervisor or co-supervisor a teacher-researcher at the CIHEAM Montpellier, can be admitted during the whole period of his thesis preparation.

A privileged collaboration is maintained with several French universities, mainly with the jointly supervised Institut Agro – University of Montpellier doctoral training programme "Economy and management of farm, agri-food and rural development" as well as the University Paul Valéry Montpellier 3 doctoral training programme.

On average, the CIHEAM Montpellier yearly receives about 30 to 50 doctoral students for short, average or long stays.

### COORDINATOR

Hatem BELHOUCLETTE

(33) (0)4 67.04.39.96 - [belhouchette@iamm.fr](mailto:belhouchette@iamm.fr)

### CONTACT

Isabelle FERRIER

(33) (0)4 67.04.60.45 - [lames@iamm.fr](mailto:lames@iamm.fr)

## ADMISSION

Doctoral projects admitted by the research unit must be related to one of the thematic axes structuring the Institute's scientific and teaching activities:

- > Mediterranean agricultures
- > Sustainable food
- > Public choices
- > Agri-food chains
- > Rural territories

Short-stay doctoral applicants are admitted on the proposal of their CIHEAM Montpellier referent teacher-researcher. The doctoral programme must also lie within the scope of institutional relations entertained with the research and training centers of the Mediterranean basin.

For long-stay doctoral applicants, an application must be submitted to the LAMES; the CIHEAM Montpellier doctoral committee makes decisions on admission. Applications to doctoral programmes are to be sent directly to doctoral schools concerned.

## RESEARCH ALLOWANCES

For long-stay applications, once the selection is made by the CIHEAM Montpellier doctoral committee, the LAMES decides on allocation of research allowances. These research allowances remain exceptional, as external funding is preferred.

## DIPLOMA

Doctoral diplomas are proper to the universities awarding them, the Institute is only acting as a welcoming laboratory.



CIHEAM  
MONTPELLIER



Sharing Knowledge, Feeding the Future

3191 Route de Mende, CS 43999, 34093 Montpellier Cedex 5, France  
Tél. : (33) 04 67 04 60 00 – [contact@iamm.fr](mailto:contact@iamm.fr)

# INFORMATION FOR MASTER 2 APPLICANTS

## ① Level and admission procedures

The required level of admission is a minimum of 4 years of studies after the Baccalaureate (equivalent to 240 ECTS) in the fields of economics, human sciences or agronomy.

Professional experience is taken into account.

A selection committee, composed of the CIHEAM Montpellier teacher-researchers, examines the applications and ranks them according to the quality of the applications (grades obtained, academic achievements, skills acquired, etc.).

Applicants meeting the required academic criteria are invited to selection interviews, which may be conducted in person or remotely, depending on the chosen Master's programme and the candidate's country of origin.

Following the interviews, the successful candidates are invited to attend according to the number of places available. Invitation letters are sent out in June.

In case of withdrawal, some candidates from the waiting list may be invited to attend.

## ② Language courses

Intensive language courses are organised during the summer (face-to-face or distance learning):

- French for applicants admitted to Master 2 CGAT, CDVALES or ECODEVA,
- English for applicants admitted to Master 2 MIDAS. To facilitate their stay in France, students admitted to the MIDAS Master's programme will be required to attend online French courses as well during the summer.

Students coming from CIHEAM\* member countries are eligible for a scholarship for the duration of the language course.

## ③ Enrolment procedures

Enrolment procedures are as follows:

- Pay the 'Contribution à la Vie Etudiante et de Campus (CVEC)' on the following website: <https://cvec.etudiant.gouv.fr>,
- Send by email the following documents to the Education and Teaching Department ([ses@iamm.fr](mailto:ses@iamm.fr)): birth certificate, certificate of payment of the CVEC, image rights, passport and visa,
- Take out health and liability insurance, as well as home insurance for students staying at the CIHEAM Montpellier campus,
- Pay the annual enrolment fee (250 €).

Upon completion of these procedures, the student will be issued with a certificate of enrolment and a student card which allows access to the Documentation Centre and computer networks.

Remote enrolment is not allowed.

## ④ Enrolment and tuition fees

The annual enrolment fee is 250€.

Tuition fees amount to 3,527€ (excluding insurance, accommodation costs and return travel) for students who are not CIHEAM\* member country nationals.

## ⑤ Scholarships

The CIHEAM Montpellier awards scholarships to students who are CIHEAM member country\* nationals, based on the quality of the applications.

The scholarships cover tuition fees, insurance, reimbursement of the Student and Campus Life Contribution (CVEC), on-campus accommodation costs at CIHEAM Montpellier, and an additional allowance.

Students who are not a CIHEAM member country\* national may inquire their government, the cultural counsellor of the French Embassy in their country or other national or international organisations for information on the possibility of receiving a grant.

---

\* CIHEAM member countries: Albania, Algeria, Egypt, France, Greece, Italy, Lebanon, Malta, Morocco, Portugal, Spain, Tunisia, Turkey



## ⑥ Documents issued

At the end of the course, the CIHEAM Montpellier issues each student with a transcript detailing the academic modules, the number of equivalent credits and the grades obtained and, in collaboration with the partner institutions:

- A certificate of achievement,
- A diploma stating the qualification obtained and the specialisation,
- A Diploma Supplement.

# THE APPLICATION FILE

## ① Preparation of the file

The application file must contain the following documents:

- Application form (to be completed online: <https://apply.iamm.ciheam.org>),
- Resume,
- Highest university degree,

If you are graduating at the end of the current academic year, you will need to provide a certificate of enrolment for the current year.

- Transcripts of higher education years (preparatory cycle, Bachelor's, Master's, Engineering degree, etc.).

## ② Application procedures

Documents must be submitted directly via the online application platform: <https://apply.iamm.ciheam.org>.

All documents must be written or translated in English or French.

Incomplete applications will not be considered by the selection committees.

## ③ Dates for 2026-2027 applications

- Opening date: 7 January 2026
- Closing date: 24 March 2026

For further information: <https://www.iamm.ciheam.org/fr/formation/programmes-master>



**CIHEAM  
MONTPELLIER**