

2026/2027

CONTINUING VOCATIONAL TRAINING COURSES CATALOGUE

CIHEAM Montpellier

April 2026



**CIHEAM
MONTPELLIER**



Qualiopi
processus certifié

REPUBLIQUE FRANÇAISE

L'article L. 6316-4 II du code du travail reconnaît la qualité de l'établissement d'enseignement supérieur au titre des 4 catégories d'actions concourant au développement des compétences



TABLE OF CONTENTS

- 4 CIHEAM Montpellier has 3 missions: Training, Research, Cooperation
- 6 Continuing education at CIHEAM Montpellier
- 7 Our strengths and teaching methods
- 8 Continuing vocational training at CIHEAM Montpellier also involves...
- 11 Our range of specialised intensive courses
- 12 Modelling and decision support tools for agriculture and the environment
- 15 Agri-food value chains and sustainability in the Mediterranean basin: concepts et methods
- 16 Written and verbal communication and scientific information
- 19 Our range of tailor-made training modules
- 19 Climate change, agricultural management and territories
- 22 Sustainable agri-food value chains: logistics, environment, strategies
- 24 Mediterranean farming system design for a sustainable food-system (MIDAS)
- 27 Our training courses co-organised with other partners
- 29 Our range of e-learning courses
- 31 Practical information and fees

CIHEAM MONTPELLIER HAS 3 MISSIONS: TRAINING, RESEARCH, COOPERATION

A WORD FROM THE DIRECTOR



CIHEAM is an intergovernmental institution set up in 1962 to “train agricultural and food managers with a view to ensure the rapid and harmonious development of the Mediterranean region”. More than 60 years later, this founding mission focuses on building the skills needed to meet the challenges that have become increasingly important:

The consequences of climate change, the erosion of biodiversity, soil degradation, water scarcity, unemployment, food insecurity and malnutrition... some of which have unfortunately been exacerbated by the COVID-19 pandemic.

Like the other three CIHEAM institutes (Bari, Chania and Zaragoza), the Mediterranean Agronomic Institute of Montpellier helps to increase the capacities of decision-makers and stakeholders in the Mediterranean basin, not only through initial training (2nd year of Master’s degree cycles), but also by designing specialised short-term courses to enable professionals to upgrade their skills as their jobs and responsibilities evolve.

Some of the training courses on offer are based on the teaching units provided in the Master’s degree cycles, while others have been specifically designed in response to the needs expressed or identified in the context of cooperation initiatives with the countries of the Mediterranean region. They take place both face-to-face and in the form of e-learning. CIHEAM Montpellier trains dozens of executives from Mediterranean countries every year, with continuing education helping to boost the formidable network of exchanges between the Mediterranean region and Europe led by CIHEAM Montpellier.

It is this range of continuing vocational training courses that we wish to introduce in this booklet, and we encourage you to contact us so that we may jointly consider how we may best meet your needs.

Thierry Dupeuble,
Director of CIHEAM Montpellier

OUR TARGET AUDIENCE

Our training courses are open to people working in the following fields:

- Central or local government
- Professional organisations
- Non-governmental organisations
- Private companies
- Project managers, rural leaders
- Managers, researchers, teachers
- Higher education.



CONTINUING EDUCATION AT CIHEAM MONTPELLIER

We offer four options for carrying out your continuing education projects, individually or as a group:

- **Ongoing vocational courses on specialised topics:** these courses are open to groups of at least 10 people, and last 1 to 2 weeks on average.
- **The opportunity to take part in our master's modules as part of continuing education:** you may take part in our Master's degree courses/modules on an individual basis (lasting 1 to 4 weeks, detailed catalogue on the internet: www.iamm.ciheam.org/fr/education/fpc)
- **Tailor-made training courses for our Mediterranean institutional partners:** to meet the specific needs of your organisation or a particular audience.
- **E-learning courses to complement or support your curriculum:** CIHEAM Montpellier develops distance learning modules to help you update your knowledge at your own pace.

OUR STRENGTHS AND TEACHING METHODS

RESPONDING TO A CHANGING INTERNATIONAL CONTEXT

Our range of courses focuses on themes linked to current issues in the Mediterranean basin, such as:

- Food security for communities, and the development of resilient and sustainable agricultural production systems
- The evolution of rural societies in the face of economic and environmental changes
- Pressure on natural resources and climate change
- Changes in communication and training techniques.



MEETING STAKEHOLDERS' NEW EXPECTATIONS BY OFFERING THEM

- A training-needs analysis
- Exchanges with professionals
- Up-to-the-minute content
- Quality speakers
- Varied communication strategies
- Active teaching methods
- Courses in English for non-French speakers.

CONTINUING VOCATIONAL TRAINING AT CIHEAM MONTPELLIER ALSO INVOLVES...

AN ISO 9001 CERTIFIED ESTABLISHMENT



CIHEAM Montpellier is ISO 9001 certified for the reception and supervision of doctoral students, on-site implementation of Master's degree level higher education programmes, continuing education training courses, particularly in the fields of economics and social sciences, training courses in French as a foreign language, and the implementation of projects for the development of agriculture, agri-food and rural areas in the Mediterranean basin.



The guarantee of quality reception conditions in an establishment with the *Bienvenue en France* certification. Since February 2020, CIHEAM Montpellier has been recognised for the quality of its reception facilities, particularly in terms of the accessibility of information and the quality of life on its campus.

THE QUALIOPi CERTIFICATION



L'article L. 6316-4 II du code du travail reconnaît la qualité de l'établissement d'enseignement supérieur au titre des 4 catégories d'actions concourant au développement des compétences

As a public higher education institution accredited by the *Haut Conseil de l'évaluation et de la recherche de l'enseignement supérieur* (IHCRERES, i.e. the French High Council for evaluation and research in higher education), CIHEAM IAMM meets the obligations of the quality certification. CIHEAM IAMM is recognised by the Ministry of Labour, Employment and Integration in its public list of training providers (L.6351-7-1 of the Labour Code). As such, our training courses are eligible for continuing vocational training funding.

EFFICIENT SUPPORT SERVICES

A CENTRE FOR LEARNING FRENCH AS A FOREIGN LANGUAGE (CFLE)



The CFLE offers foreign students and professionals the opportunity to improve their French language skills (general and scientific French, written communication, DALF preparation). It is certified *Qualité FLE*.

To find out more: www.fle-montpellier.com

A SPECIALISED RESOURCE CENTRE FOR THE MEDITERRANEAN REGION

During your stay, you may access the resources of our Mediterranean documentation centre (books, periodicals, online resources) and benefit from personalised online tutoring to meet your needs.

To find out more:

www.iamm.ciheam.org/ress_doc/opac_css/index.php

A LOCAL IT SERVICE

During your stay, our IT department will facilitate your access to digital resources and provide you with secure online collaboration areas.

A CAMPUS AT YOUR DISPOSAL

CIHEAM Montpellier has accommodation for almost 100 people in a pleasant environment in single or double studio flats.

To find out more:

<https://www.iamm.ciheam.org/fr/about/ciheam-iamm/campus>





OUR RANGE OF SPECIALISED INTENSIVE COURSES

ONE-TO TWO-WEEK SESSIONS

Every year, CIHEAM Montpellier's teacher-researchers organise intensive training sessions on specialised topics.

MODELLING AND DECISION SUPPORT TOOLS FOR AGRICULTURE AND THE ENVIRONMENT

- Integrated assessment of agriculture and sustainable development
- Olympe: a database and decision-support tool for agriculture
- Management of plant-protection practices at plot and farm levels: EToPhy '*Evaluation de la Toxicité des pratiques Phytosanitaires*' (Evaluation of the toxicity of plant protection practices)
- Using geographical information to map your data with QGIS software
- Earth Observation for agriculture.

TERRITORIAL ECONOMY AND VALUE CHAINS

- Analysis of agricultural and agri-food sectors and value chains: methods and applications.

WRITTEN AND VERBAL COMMUNICATION AND SCIENTIFIC INFORMATION

Courses for enhancing the value of your research and improving your communication skills.

MODELLING AND DECISION SUPPORT TOOLS FOR AGRICULTURE AND THE ENVIRONMENT

INTEGRATED ASSESSMENT OF AGRICULTURE AND SUSTAINABLE DEVELOPMENT (IN ENGLISH)

In this course, different model-chain approaches are used as examples to present how concepts, tools and models (conceptual and numerical) can be integrated to assess complex agricultural systems and sustainable development. The course is problem-oriented, so all lectures are linked to practical applications, such as the impact of climate change on the resilience of farming systems in the Mediterranean area. Models utilized for these practical applications will be presented and discussed, but gaining detailed understanding of specific model components is not the objective of this course. At the end of the course, participants should understand how an integrated research framework and its individual components contribute to the integrated assessment of a problem. Besides a series of plenary presentations by speakers, a number of interactive activities should allow participants to discuss general and detailed issues with the specialists and other participants.

Training course organised on demand. Please contact us regarding session dates.

OLYMPE: A DATABASE AND DECISION SUPPORT TOOL FOR AGRICULTURE

The aim of this crash course in Olympe software is to master this farm modelling tool by building a techno-economic model that enables the analysis of farmers' strategies over several years. It makes it possible to measure the consequences of technical decisions and the importance of economic risk. It also provides a forward-looking perspective on the choice of future production systems.

Training course organised on demand. Please contact us regarding session dates or the possibility of e-learning.

ASSESSING THE TOXICITY OF PLANT PROTECTION PRODUCTS: TOOLS FOR MEASURING THE IMPACT ON HEALTH AND THE ENVIRONMENT, AND ADAPTING PRACTICES

The 'Dephyto' web platform is used to assess and control the impact of plant protection products on the health of applicators and the environment. 'Dephyto' is based on the EToPhy¹ simulator and EtoPhy Analyses modules developed by CIHEAM Montpellier (Mediterranean Agronomic Institute of Montpellier), (5-day training course). The 'Dephyto' platform makes it possible to evaluate the health and environmental impact of plant protection practices on human health and the environment using risk indicators:

- The TOA indicator (*TOxicité Aigüe d'un pesticide sur la santé*, i.e. Acute health toxicity of a pesticide) looks at short-term effects.
- The TOC indicator (*TOxicité Chronique*, i.e. Chronic Toxicity indicator) of a pesticide on health considers long-term effects.
- The Terra indicator highlights the risk of a pesticide's toxicity to earthworms, bees and birds.
- The Aqua indicator presents the risk of a pesticide's toxicity to aquatic ecosystems.

These indicators make it possible to assess the degree of toxicity of plant protection products on the health of applicators and on the environment on different spatial scales (plot, farm and territory), and at the level of the different compartments (water, air and soil). This tool is aimed at professionals involved in pesticide management who wish to:

- Acquire up-to-date knowledge on the assessment and management of health and environmental risks.
- Improve the use and choice of pesticides based on the characteristics of the natural environment and the physico-chemical, eco-toxicological and toxicological properties of active ingredients and products.

The EtoPhy Simulator and EtoPhy Analyses modules are available on the 'Dephyto' platform: www.dephyto.com for France, and are currently being adapted for other countries in Europe and Africa.

Training course organised on demand. Please contact us regarding session dates.

¹ EToPhy software (2020), APP deposit n°: IDDN.FR.001.090003.000. S.P.2020.000.31500.

EToPhy has been recommended by the French Environment Ministry's Commissariat Général au Développement Durable and referenced by INRAE and AFB in the database of research tools for reducing water pollution by pesticides. This tool was developed as part of the 'Evaluation and reduction of risks associated with the use of pesticides' programme (TRam project under the EcoPhyto I Plan, approved by the Ministries of the Environment and Agriculture).

USING GEOGRAPHIC INFORMATION TO MAP YOUR DATA WITH QGIS SOFTWARE

The aim of this training course is to introduce participants to the analysis of geographical information in order to carry out a pre-diagnosis of the agricultural, economic and socio-demographic dynamics of a rural area. Through the creation of thematic maps, it shows how complex information can be shared to assist with land management.

This course teaches the basics of geographic information processing and how to use GIS (Geographic Information Systems) software for spatialising data. Participants will learn how to use QGIS, the leading software in the world of geomaticians, to help diagnose land management projects and support decision-making in agriculture and the environment. Its ease of use also makes it an ideal tool for an introduction to GIS. This course will provide you with the basic skills you need to use your business data in a GIS:

- Creating a project using QGIS
- Selecting spatial elements that meet one or more criteria
- Creating new fields and indicators
- Mastering attribute joins to geolocate information
- Analysis tools for spatially cross-referencing data
- Drawing up thematic maps

The interactive use of practical examples enables students to acquire the basic concepts of GIS, for visualising, analysing and mapping information integrated into geographical space.

Training course organised on demand. Please contact us regarding session dates.

EARTH OBSERVATION FOR AGRICULTURE

The aim of this course is to introduce participants to the use of remote sensing for agricultural monitoring, highlighting remote sensing products and techniques applicable to agriculture. It uses practical examples to show how satellite images can be interpreted and used to improve farmland management.

This course provides the basics of Earth Observation (EO) applied to agriculture and teaches participants how to use satellite image processing tools to extract spatial and spectral information. Participants will learn how to use specialised plugins within QGIS software to process Sentinel-2 optical satellite images. This course is also designed to provide an introduction to supervised and unsupervised classification of satellite images.

This course provides the basic skills needed to use remote sensing data in agriculture:

- Understanding the spectral, spatial, radiometric and temporal characteristics of satellite images
- Extraction and analysis of spectral indices such as NDVI and NBR
- Use of supervised and unsupervised classification methods (K-Means, maximum likelihood)
- Mapping agricultural land use from Sentinel-2 images



The course is based on practical examples that enable students to acquire the basic concepts of remote sensing for agriculture, in order to analyse and map information integrated into geographical space.

Prior knowledge of QGIS is mandatory.

AGRI-FOOD VALUE CHAINS AND SUSTAINABILITY IN THE MEDITERRANEAN BASIN: CONCEPTS AND METHODS

The aim of this course is to provide tools for understanding and analysing how an agri-food value chain operates, in order to:

- Be able to identify the mechanisms of interdependence, power relations, conflicts and issues that characterise the economic agents in a value chain, as well as the creation of value throughout the supply chain in view of the sustainability of food systems.
- Understand the coordination mode and steering process of agri-food value chains and the transition towards environmental and social sustainability.
- Be familiar with the main methods for analysing value chains and stakeholder strategies: theoretical contributions from industrial economics and the circular economy.
- Raise stakeholders' awareness of the utility of the "value chain" approach for the sustainable development of food systems.

Training course organised on demand. Please contact us regarding session dates

WRITTEN AND VERBAL COMMUNICATION AND SCIENTIFIC INFORMATION

MASTERING SCIENTIFIC INFORMATION RESEARCH SKILLS

This course offers a methodology and tools for effective access to scientific information: mastering information research skills, organising and managing results, organising and automating internet monitoring.

IMPROVING VERBAL COMMUNICATION

Savoir valoriser ses travaux de recherche en améliorant ses capacités de présentation à l'oral (techniques de communication et prise de parole...).

Training course organised on demand. Please contact us regarding session dates.

To find out more: cfle@iamm.fr

IMPROVING WRITING COMMUNICATION

Perfect your academic writing techniques. Face-to-face or online training.

Courses organised on demand.

To find out more: cfle@iamm.fr

ENGLISH IN A PROFESSIONAL CONTEXT

You have little time and need to improve your English for personal or professional reasons. CFLE-IAMM can offer you tailor-made courses:

- A1 elementary level (1.5 or 3h per week)
- A2/B1 intermediate level (1.5 or 3h per week)
- B2 advanced level (1.5h per week).

To find out more: cfle@iamm.fr

WRITING A SCIENTIFIC PAPER

Learn how to make the most of your scientific research, particularly in the field of agronomy and life sciences, to facilitate the writing of any scientific or technical document.

Training course organised on demand.
Please contact us regarding session dates.

To find out more: **cfle@iamm.fr**



The full range of CFLE courses is available at:
<https://www.fle-montpellier.com/fr/accueil>



OUR RANGE OF TAILOR-MADE TRAINING MODULES

Our Master's degree modules are open to continuing education, which allows people already familiar with the subject to acquire additional training in concepts, tools and methods.

These courses focus on 3 main themes:

- **The impact of climate change on the management of agriculture and local resources**
- **The diversification and resilience of agricultural production systems:** sustainable Mediterranean agricultural production systems and food security (in English)
- **Sustainable agri-food value chains:** logistics, environment and strategies.

CLIMATE CHANGE, AGRICULTURAL MANAGEMENT AND TERRITORIES

SEPTEMBER 2026

POLITICS, CLIMATE AND TERRITORIAL AGRICULTURAL CAPITAL

Objectives

- Gaining an understanding of the context in terms of changes in public policy: in what way is the climate issue renewing public action (or not) and how, at a regional level in particular.
- Mastering the main concepts used in 'climate-oriented' public policies: vulnerability, adaptation and adaptive capacity.
- Approaches to agroecology and analyses of territories and agricultural households based on multiple assets.

OCTOBER 2026**MEDITERRANEAN AGRICULTURE IN THE CONTEXT OF CLIMATE CHANGE****Objectives**

The aim of this module is to learn about climate change in the Mediterranean region, and its impact on rural resources and agriculture.

- The sustainability of Mediterranean agriculture in the face of climate change
- Landscape analysis and the typology of production systems: field trips to understand the challenges facing agriculture in Mediterranean mountain areas and wetlands
- Agricultural and rural public policies in the context of climate change.

OCTOBER-NOVEMBER 2026**DIAGNOSIS AND CARTOGRAPHIC ANALYSIS OF RURAL AREAS****Objectives**

The aim of this module is to teach participants how to jointly learn about statistical and cartographic tools and reflect on the analysis of territorial public policies. At the end of this module, students will be able to answer the following question: how can cartographic, statistical and modelling tools improve our understanding of reality and enable us to formulate useful recommendations for local policies and those involved in implementing them?

- Using cartography for the territorial diagnosis and decision aid tool
 - Understanding a rural territory based on vulnerability and adaptive capacity approaches
 - Learning about rapid diagnosis methods applied to a rural area.
- Module with collective field trip

NOVEMBER-DECEMBER 2026**MONITORING AND EVALUATION TOOLS FOR TERRITORIAL RESOURCES****Objectives**

This module aims to provide an understanding of the roles and uses of the main territorial public policy tools in a context of adaptation: three specific tools – environmental accounting, financial management and the economic evaluation of non-market assets – are taught.

- Data analysis
- Territorial ecological accounting
- Economic valuation of non-market assets.

JANUARY 2027

AGRICULTURAL BUSINESS MANAGEMENT

Objectives

- Mastering the techniques of farm business management using digital technology. Agri environmental measures and management of externalities.
- Drawing up a development plan for a farming business using a multi-periodic simulator
- Operational experience in the field with farmers and professional representatives.

Module with practical application in the study area with farmers and professional managers (group field trip).

JANUARY 2027

OPTIMISATION AND BIOPHYSICAL MODELS

Objectives

- Knowing how to develop an optimisation model (linear programming).
- Being able to implement a bio-physical simulation model.
- Analysing the resilience of cropping systems under water stress.

JANUARY-FEBRUARY 2027

STAKEHOLDERS AND NATURAL RESOURCE MANAGEMENT

Objectives

- The economics of the environment and natural resources, environmental policy instruments
- IWRM (Integrated Water Resources Management): irrigation techniques and control of inputs, management of water supply and demand
- Use of spatial simulation models for decision support
- The transition from farm models to aggregated regional models
- Analysis of the interaction between individual and collective choices at a regional level
- Simulation game for the negotiation and evaluation of collective choices in a small agricultural region.

SUSTAINABLE AGRI-FOOD VALUE CHAINS: LOGISTICS, ENVIRONMENT, STRATEGIES

SEPTEMBER-OCTOBER 2026

AGRI-FOOD VALUE CHAINS AND SUSTAINABILITY: CONCEPTS AND METHODS

Objectives

- Knowing how to identify an agri-food value chain and analyse how it operates
- Coordination and management of agri-food value chains, and the transition to environmental and social sustainability
- Methods for analysing value chains and stakeholder strategies: theoretical contributions from industrial economics and the circular economy.

OCTOBER-NOVEMBER 2026

TECHNICAL ASPECTS OF LOGISTICS, INNOVATION, SUSTAINABILITY AND COST MANAGEMENT

Objectives

- Understanding the logistic function as a strategic business function
- Being familiar with information systems and data processing methods
- Mastering methods of analysing logistics costs and economic and environmental performance indicators.

NOVEMBER-DECEMBER 2026

REGULATIONS, SOCIAL RESPONSIBILITY STANDARDS FOR LOGISTIC AND THE ENVIRONNEMENT

Objectives

- Learning about the conventions, contracts and standards governing international logistics
- Becoming familiar with the normative frameworks relating to the energy and ecological transition, applied to logistics at different levels (territorial, urban, etc.)
- Understanding national and international regulations relating to societal commitments to sustainable development, the circular economy and the fight against food waste.

DECEMBER 2026-JANUARY 2027

DISTRIBUTION AND SUPPLY CHAIN MANAGEMENT

Objectives

- Understanding how distribution channels work, the role of the stakeholders involved and how they coordinate supplies
- Understanding the challenges of digitisation
- Acquiring methods of supply for optimised and sustainable flow management
- Acquiring the fundamentals of waste management in agri-food supply chains.



JANUARY-FEBRUARY 2027

COMPANY ORGANISATION, HUMAN RESOURCE MANAGEMENT AND CORPORATE SOCIAL RESPONSIBILITY

Objectives

- Understanding the approach, tools and main models for the strategic analysis of organisations
- Learning supply methods for optimised and sustainable flow management
- Learning the basics of waste management in agri-food supply chains.

MARCH 2027

INTERNATIONAL TRADE AND MARKETING

Objectives

- Learning about the basics of marketing associated with the creation of value for the company
- Understanding the challenges of an international distribution policy and communication strategy
- Identifying the strategic behaviour of companies with regard to products derived from sustainable production processes
- Being familiar with international sustainability quality marks, standards and certifications.

MEDITERRANEAN FARMING SYSTEM DESIGN FOR A SUSTAINABLE FOOD-SYSTEM (MIDAS)

OCTOBER 2026

TRANSITION OF AGRICULTURAL SYSTEMS UNDER SOCIO-ECONOMIC AND ENVIRONMENTAL UNCERTAINTY

Objectives

- Analysing the structure and assessing the performance of dominant production systems in the Mediterranean area
- Map agricultural systems and their impact on the environment
- Conceptualising and representing complex agricultural systems
- Prospective analysis in relation to climate change issues on a global scale.

NOVEMBER 2026

MODELING OF MEDITERRANEAN CROPPING SYSTEMS

Objectives

- Integration of agro-systems under high water stress into modelling approaches
- Mastering the use of mechanistic and dynamic crop models
- Mastering the development and testing of water balance models.

DECEMBER 2026

METHODS OF DATA COLLECTION AND ANALYSIS

Objectives

- Setting up the appropriate framework for data collection and analysis
- Integration in questionnaires' design, data collection methods, sampling design, dealing with data quality, making estimates and combining data from different sources.
- Training of data analysis in different environments.

JANUARY – FEBRUARY 2027

MODELING OF MEDITERRANEAN AGRICULTURAL SYSTEMS

Objectives

- Integrating the basic concepts of Environmental Economics into the role of mathematical programming models as a decision support tool
- Integrating the different Mediterranean agricultural systems by taking into account a significant amount of technical, agronomic and economic data
- Learning about the development of bio-economic models using GAMS language
- Designing and implementing scenario simulations in different socio-economic and environmental contexts
- Analysing the resilience of Mediterranean agricultural systems through multi-criteria and multi-scale analyses.

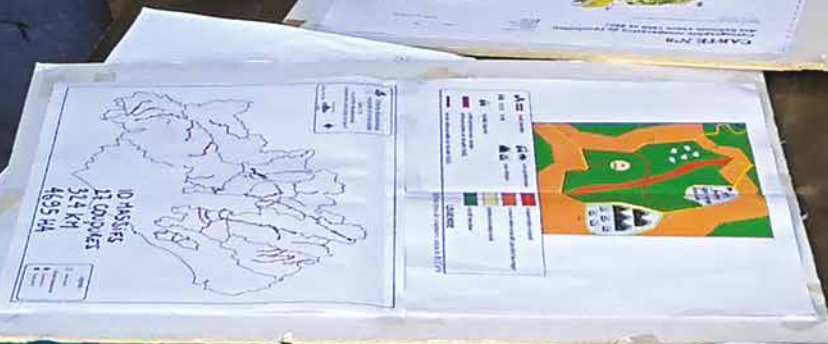


FEBRUARY 2027

MULTI-AGENT ANALYSIS FOR DESIGNING RESILIENT AGRICULTURAL SYSTEMS

Objectives

- Model sustainable food systems: from production to nutrition
- Regional modelling and resilience analysis
- Integration to companion modelling and multi-agent systems for the assessment of agricultural territories.



OUR TRAINING COURSES CO-ORGANISED WITH OTHER PARTNERS

EXAMPLES OF TAILOR-MADE TRAINING COURSES DEVELOPED IN COLLABORATION WITH OUR PARTNERS

STUDY TOUR ON SUSTAINABLE VITICULTURE AND INNOVATION IN A CONTEXT OF CLIMATE CHANGE

In partnership with the Instituto Madrileño de Investigación Agraria y de Desarrollo Rural, Agrario y Alimentario (IMIDRA)

Montpellier

Target audience: winegrowers and winemakers, IMIDRA and Autonomous University of Madrid lecturers and researchers, senior executives and elected representatives from the Community of Madrid.

GIS FOR TERRITORIAL PLANNING

in collaboration with the Agricultural and European Universities of Tirana (Albania), the University of Korçia (Albania) and the University of Prishtina (Kosovo).

Montpellier

Target Audience : Teacher-researchers of these Universities

INTEGRATING ASPECTS RELATING TO CLIMATE CHANGE (CC) AND ENVIRONMENTAL CHANGE INTO THE DESIGN AND EVALUATION OF SUSTAINABLE RURAL DEVELOPMENT PROJECTS

in collaboration with the United Nations Industrial Development Organization (UNIDO) and the Agricultural Development Agency (ADA) of Morocco.

Montpellier

Target audience: senior executives from the Moroccan Ministry of Agriculture, Maritime Fishing, Rural Development and Water and Forests.

COLLECTIVE NATURAL RESOURCE MANAGEMENT AND LOCAL PRODUCT DEVELOPMENT

in collaboration with the FAO and the Direction Générale de l'Aménagement et de la Conservations des Terres Agricoles (DGACTA, i.e. Directorate General of Agricultural Land

Development and Conservation) of the Ministry of Agriculture, Water Resources and Fisheries of Tunisia

Montpellier

Target audience: senior executives from the Tunisian Ministry of Agriculture, Water Resources and Fisheries, and the Regional Commission for Agricultural Development in Tataouine, Medenine and Gabes.

GENERAL ECONOMIC EVALUATION OF PROJECTS

In collaboration with the Moroccan Ministry of Agriculture, Maritime Fishing, Rural Development and Water and Forests.

Montpellier

Field trip and training course organised as part of the ENPARD-Maroc project financed by the European Union.

Target audience: Senior executives from the Moroccan Ministry of Agriculture, and regional executives.

PRODUCT PROMOTION AND MARKET ACCESS FOR COOPERATIVES

In collaboration with the Union of Cooperatives of Al-Joumeh and the Regional Union of Cooperatives of Baalbeck-Hermel (Lebanon), as part of the HASAD project funded by the International Fund for Agricultural Development (IFAD).

Montpellier

Target audience: Senior executives from the Green Plan of the Lebanese Ministry of Agriculture, cooperative managers and farmers from the Baalbeck-Hermel and Akkar regions (Lebanon).



OUR RANGE OF E-LEARNING COURSES

As part of our ongoing efforts to adapt our training courses to the needs of professionals, we offer distance learning modules so that you may organise your study schedule to suit your availability.

These courses are offered on a Moodle e-learning platform with regular tutoring of participants and facilitated access.

E-LEARNING MODULES AVAILABLE

PREREQUISITES IN MICRO-ECONOMICS

An essential course for updating your theoretical knowledge and understanding in-depth courses in development economics and agri-food economics: 80 hours of online courses, with the possibility of online tutoring and collaboration for a period of 8 weeks, adjustable according to the content chosen.

CFLE ONLINE COURSES: TUTORED AND/OR SELF-STUDY

If you are abroad or unable to travel and would like to take an online course, please do not hesitate to contact us for further information.

French as a Foreign Language: beginner level fully booked / course available for previously constituted groups

Intercultural module: self-study / individual training (A2 level required)

Written communication: self-study / individual training (B1 level required)

Training courses organised on demand.

To find out more: cfle@iamm.fr

Other e-learning modules are currently being developed.
To find out more, please contact us at fpro@iamm.fr



PRACTICAL INFORMATION AND FEES

HOW TO ENROL

Our continuing vocational training offer is available online on the CIHEAM Montpellier website:

www.iamm.ciheam.org/fr/education/fpc

You may download the application form and send it to us by e-mail at: fpro@iamm.fr

SPECIALISED COURSED AND INDIVIDUAL MASTER'S DEGREE MODULES

- Completed application form, specifying how payment for the course will be made
- CV
- Copy of highest diploma obtained
- If you are a non-French speaker, a language proficiency certificate
- Covering letter
- 2 passport photos
- If you are a government official, line management approval
- Once your application has been examined, confirmation of enrolment will be sent to you no later than 15 days before the start of the course.

COURSE FEES AND PAYMENT

Rates for specialised short-term courses

Duration: 1 week

The cost of specialised training varies according to the number of participants and the resources used. The cost of each specialised course is published on our website approximately 2 months before it starts and is specified in the letter confirming enrolment.

Generally speaking, it varies from 500 to 600 euros per person, for one week's training (excluding travel, insurance and accommodation costs).

Course fees are payable:

- at the latest on the first day of the course, in the case of individual tuition
- in accordance with the terms of the agreement, if funded by an organisation.

Fees for Masters of Science individual modules

1 week : 600 €

2 weeks : 800 €

1 month : flat rate of 1,000 € (excluding collective field trip)

COURSE CONDITIONS

Cancellation

If the course is cancelled before arrival, the registration fee will be forfeited. In the event of interruption, course fees will not be reimbursed (except in special cases, with justification and after consideration of the request). The CIHEAM Montpellier reserves the right to cancel courses that do not receive a sufficient number of applications. In this case, the full amount paid will be refunded.

Attendance

Unless prior agreement has been given by CIHEAM Montpellier, no reimbursement or compensation will be made for any hour, day or part of the course not attended by the participant (late start, early departure, absence during the course).

Insurance

All students must take out their own insurance policy, whenever possible and in accordance with the legislation of their country, to cover illness, loss of money, valuables or luggage, theft and interruption of the course for personal or health reasons, and civil liability.

NB: It is possible to take out health and civil liability insurance on site at the time of enrolment.

POSSIBILITY FOR TRAINING FEES TO BE FUNDED

If you are a foreign national

You may be able to obtain funding from your employer or through your embassy (SCAC – French Embassy). You may also consult the Campus France website for information on funding options in France:

www.campusfrance.org

If you are a French national

All our courses are eligible for training funds: ask your employer (CPF), your OPCO (*Opérateurs de Compétences*) or France Travail.

To find out more: **fpro@iamm.fr**

MISCELLANEOUS INFORMATION

Cost of a visa for France

From 90€ to 120€, depending on the length of your stay and the amount of application fees required locally, please visit the France-visas website:

<https://france-visas.gouv.fr/en/web/france-visas/la-demarche>

TRAINING COURSES SCHEDULED FOR 2026-2027 AT CIHEAM MONTPELLIER

Course name	Session dates	Fees	Page
SPECIALISED INTENSIVE COURSES (*)			
Integrated Assessment of Agriculture and Sustainable Development	On demand	600 €	12
Olympe: a database and decision-support tool for agriculture	On demand	600 €	12
Evaluation of the Toxicity of Plant Protection Products: tools for measuring the impact on health and the environment and for adapting practices	On demand	600 €	13
Using geographic information to map your data with QGIS software	On demand	600 €	14
Earth Observation for agriculture	On demand	600 €	14
Agri-food value chains and sustainability in the Mediterranean basin: concepts and methods	On demand	600 €	15
Mastering scientific information research skills	On demand	**	16
Improving verbal communication	On demand	**	16
Improving written communication	On demand	**	16
English in a professional context	On demand	**	16
Writing a scientific paper	On demand	**	17
INDIVIDUAL MASTER'S DEGREE MODULES			
CLIMATE CHANGE, AGRICULTURAL MANAGEMENT AND TERRITORIES			19
Politics, Climate and territorial agricultural capital	September 2026	800 €	19
Mediterranean agriculture in the context of climate change	October 2026	800 €	20
Diagnosis and cartographic analysis of rural areas***	October-November 2026	1000 €	20
Monitoring and evaluation tools for territorial resources	November-December 2026	1000 €	20
Agricultural Business Management***	January 2027	1000 €	21
Optimisation and biophysical models	January 2027	800 €	21
Stakeholders and natural resource management	January-February 2027	1000 €	21

Course name	Session dates	Fees	Page
INDIVIDUAL MASTER'S DEGREE MODULES			
SUSTAINABLE AGRI-FOOD VALUE CHAINS: LOGISTICS, ENVIRONMENT, STRATEGIES			22
Agri-food value chains and sustainability: concepts and methods	September-october 2026	800 €	22
Technical aspects of logistics, innovation, sustainability and cost management	October-november 2026	1500 €	22
Regulations, social responsibility standards for logistic and the environment	November-december 2026	1000 €	22
Distribution and supply chain management	December 2026-January 2027	800 €	23
Company organisation, human resource management and corporate social responsibility	January-February 2027	1000 €	23
International trade and marketing	March 2027	1000 €	23
MEDITERRANEAN FARMING SYSTEM DESIGN FOR A SUSTAINABLE FOOD-SYSTEM (MIDAS)			24
Transition of agricultural systems under socio-economic and environmental uncertainty	October 2026	1000 €	24
Modelling Mediterranean cropping systems	November 2026	1000 €	24
Methods data collection and analysis	December 2026	1000 €	24
Modelling Mediterranean agricultural systems	January-February 2027	1000 €	25
Multi-agent analysis for designing resilient agricultural systems	February 2027	1000 €	25

(*) Organised for a group of at least 10 people, please contact us regarding session dates at fpro@iamm.fr

(**) To find out more, please contact the CFLE at cfle@iamm.fr

(***) Module with group field trip

For our training courses co-organised with other partners, and e-learning courses: please contact us at fpro@iamm.fr regarding organisational details and session dates.

CONTACT US

Email: fpro@iamm.fr

Tel.: 00 33 (0)4 67 04 60 11

CIHEAM Montpellier

3191, route de Mende, CS 43999

34093 Montpellier Cedex 5

France



WELCOMING YOU

During your training at CIHEAM Montpellier, you can be accommodated in our apartment building on the campus itself, in the heart of the Mediterranean park.

www.iamm.ciheam.org/fr/education/masters/campus

Tel.: 00 33 (0)4 67 04 60 00

FIND OUT MORE

www.iamm.ciheam.org/fr/education/fpc

www.iamm.ciheam.org